

MONTHLY MEMBERSHIP PROGRESS REPORT

LOCATION KENTUCKY

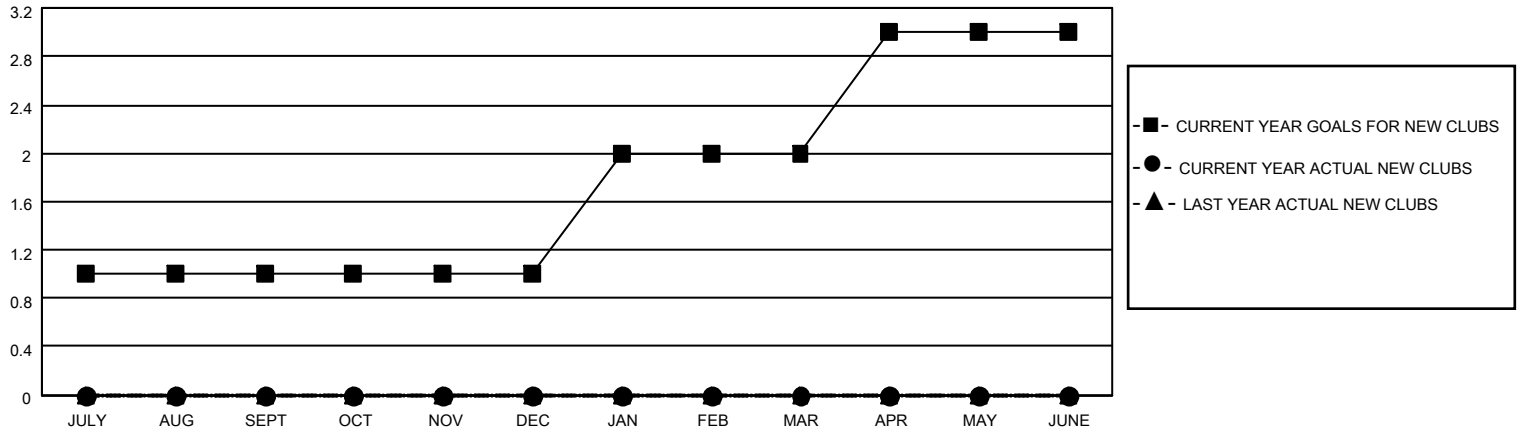
District 43 K

Results as of: 2/28/2021

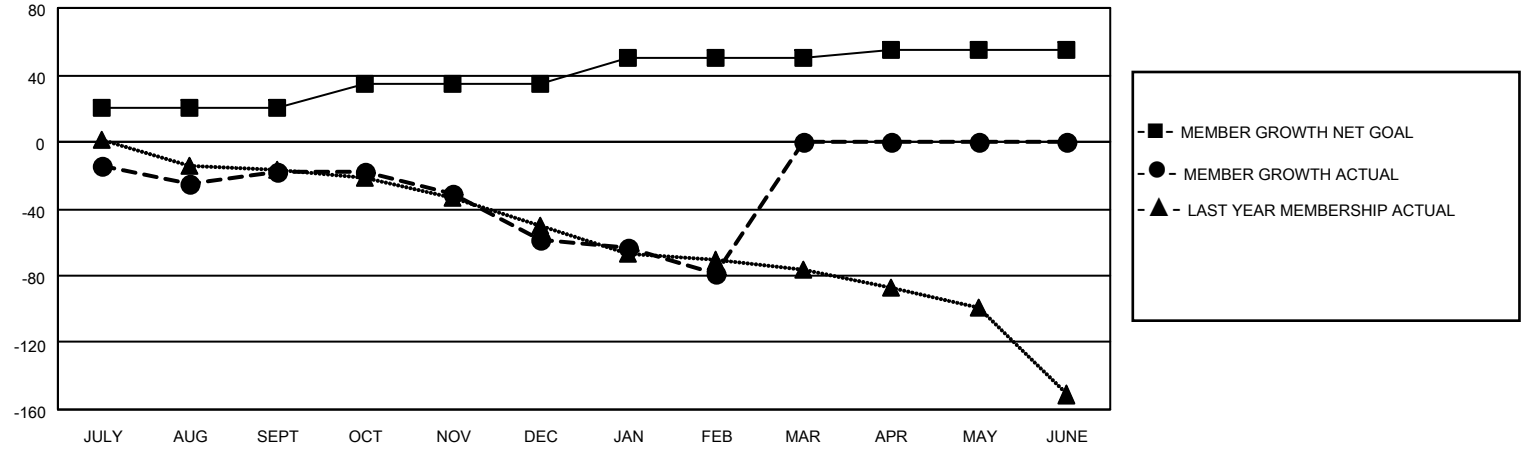
Clubs			
RESULTS FOR 2020-2021			
QUARTER	NEW CLUB GOAL	NEW CLUBS	DROPPED CLUBS
JULY/AUG/SEPT	1	0	0
OCT/NOV/DEC	0	0	0
JAN/FEB/MAR	1	0	1
APR/MAY/JUNE	1	0	0

Members			
RESULTS FOR 2020-2021			
QUARTER	MEMBER GROWTH NET GOAL	MEMBER GROWTH ACTUAL	DROPPED MEMBERS ACTUAL (including transfers)
JULY/AUG/SEPT	20	20	34
OCT/NOV/DEC	15	31	69
JAN/FEB/MAR	15	19	37
APR/MAY/JUNE	5	0	0

GOALS AND ACTUAL NEW CLUBS CUMULATIVE



GOALS AND ACTUAL MEMBERS CUMULATIVE



DROPPED CLUBS: 1	
DROPPED MEMBERS	
DECEASED	27
CLUB CANCELLED	6
OTHER	107
TOTAL	140

25 CLUBS OF 70 ADDED 1 OR MORE NEW MEMBERS

[CLICK HERE FOR CUMULATIVE MEMBERSHIP DATA](#)

<u>GENDER DISTRIBUTION</u>	
MALE	1,263 (67.04%)
FEMALE	621 (32.96%)

TOTAL FAMILY UNIT MEMBERS	367
FAMILY MEMBERS PAYING HALF DUES	188